

Violino Secondo

La Primavera

Giunt'e la Primavera

CONCERTO I

Allegro *Piano*

Forte

Piano **B** *Canto de' gl' Angelli* *Solo*

t. t. t. t. t.

e festoretti la salutari gli auggi con lieto canto

t. t. t. t. t. *Tutti*

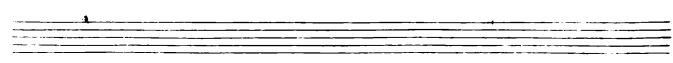
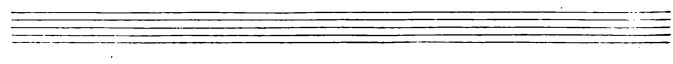
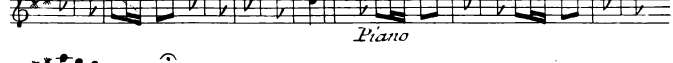
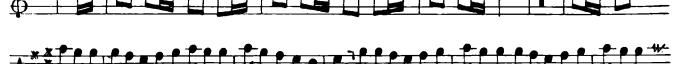
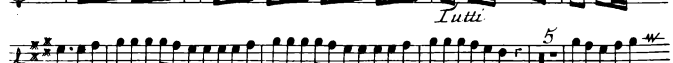
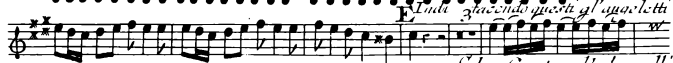
C *Scorrono i fonti e i*

fonti allo spirar de Zeffiretti Con dolce mormorio scorrono in tanto *Piano*

Forte

D *Vengon coprendo l'aer di uero amanto E Tampi e tuoni ad annuntiar la di*

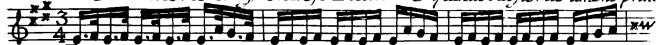
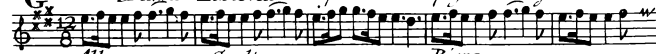
Violino Secondo



4

Violino Secondo

F

Mormorio di fronde, e Piante: E quindi Sul fiorito ameno prato*Largo e Pianissimo Sempre**Al caro mormorio di fronde et piante Dorme l'Caprar col fido can à lai.*G *Danza Pastorale. Di pastorai Zampogna al suon festante Danzan**Allegro con Sordine**Piano*

520

Ninfe e pastor nel tetto amato di Primavera all'apparir brillante

53

First musical staff, starting with a treble clef and a key signature of two sharps (F# and C#). The music features a series of eighth notes with slurs. The dynamic marking *Forte* is centered below the staff.

Second musical staff, continuing the eighth-note pattern with slurs. A fermata is placed over the final note of the staff.

Third musical staff, featuring a mix of eighth and sixteenth notes. The dynamic marking *Piano* is centered below the staff.

Fourth musical staff, starting with a treble clef and a key signature of two sharps. The music features a series of eighth notes with slurs. The dynamic marking *Forte* is centered below the staff.

Fifth musical staff, starting with a treble clef and a key signature of two sharps. The music features a series of eighth notes with slurs. The dynamic marking *Piano* is centered below the staff. A measure rest for 13 measures is indicated at the beginning.

Sixth musical staff, featuring a series of eighth notes with slurs.

Seventh musical staff, featuring a series of eighth notes with slurs.

Eighth musical staff, featuring a series of eighth notes with slurs. The dynamic marking *Forte* is centered below the staff.

Ninth musical staff, featuring a series of eighth notes with slurs. The dynamic marking *M* is centered below the staff.

Tenth musical staff, featuring a series of eighth notes with slurs. A measure rest for 7 measures is indicated at the beginning.

Eleventh musical staff, featuring a series of eighth notes with slurs.

Twelfth musical staff, featuring a series of eighth notes with slurs. The dynamic marking *Piano* is centered below the staff.